

ORION

STANDARD SERIES

DOOR DETAILS

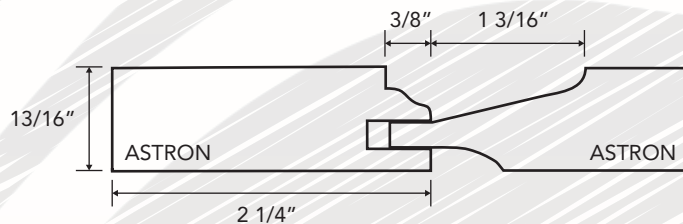
Construction Method: Cope-N-Stick
Outside Edge Detail: OD-6 (Square No Lip)
Inside Edge Detail: Astron
Panel Detail: Astron
Minimum Width: 9"
Minimum Height: 9"
Max Width: 26"
Max Height: 72"



ROUTED DRAWER FRONT
Minimum Height: 4-1/2"

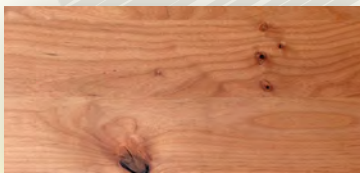


DOOR PROFILE



Frame width shown is STANDARD. Custom sizes are available.
*Center Rail automatically inserted at 48" and above unless specified.

OPTIONAL DRAWER FRONTS



SOLID SLAB

Minimum Height: 4-1/2"

*SPECIFICATIONS AND DETAILS SHOWN ARE SUBJECT TO CHANGE.

Species Shown: Knotty Alder

PHONE

800.200.0975

FAX

909.606.3270

ONLINE

CORONAMILLWORKS.COM



Manufacturing Cabinet Parts Since 1995

WOOD | THERMOFOIL | E-SERIES | DRAWER BOXES | CNC CABINET COMPONENTS